

## BASIC DETAILS

20706--ITBP PUB SCH PO NATHUPUR SABOLI CAMP SONIPAT HRY

SCHOOL NAME	ITBP PUB SCH PO NATHUPUR SABOLI CAMP SONIPAT HRY	SCHOOL CODE	20706
ADDRESS	ITBP PUBLIC SCHOOL,SS BN ITB POLICE (MHA),PO NATHUPUR SABOLI CAMP DISTT SONIP	AFFILIATION CODE	530741
PRINCIPAL	MR SUKRAM PAL	PRINCIPAL'S CONTACT NUMBER	9953811683
PRINCIPAL'S EMAIL ID	yadavsp9770@gmail.com	PRINCIPAL'S RETIREMENT DATE	31/05/2023
SCHOOL'S CONTACT NUMBER	011-27282575	SCHOOL'S EMAIL ID	itbppublicschool530@gmail.com
SCHOOL'S WEBSITE	www.itbppublicschoolsaboli.com	SCHOOL'S FAX NUMBER	011027284598
LANDMARK NEAR SCHOOL	ITBP CAMP SSBN SABOLI	YEAR OF ESTABLISHMENT	1998
AFFILIATION VALIDITY	2009 TO 2021	AFFILIATION STATUS	REGULAR
NAME OF THE TRUST/SOCIETY/COMPANY REGISTERED WITH	ITBPF EMPLOYEES EDUCATIONAL SOCIETY	REGISTRATION DATE	17/10/2008
SOCIETY REGISTRATION NUMBER	63671/2008	REGISTRATION VALIDITY	PERMANENT REGISTRATION
NOC ISSUING AUTHORITY	ADIG ITBP FORCE (CENTRAL GOVT.)	NOC ISSUING DATE	24/06/2008
NO OBJECTION CERTIFICATE	VIEW (PdfHandler.aspx? FileName=G:\cbse\2016\schdetails\noc\20706.PDF)	NON PROPRIETY CHARACTER AFFIDAVIT/NON PROFIT COMPANY AFFIDAVIT	VIEW (PdfHandler.aspx? FileName=G:\cbse\2016\schdetails\aidavit\20706.PDF)

TOTAL NUMBER OF TEACHERS (ALL CLASSES)	17	NUMBER OF PGTs	0
NUMBER OF TGTs	5	NUMBER OF PRTs	8
NUMBER OF PETs	1	OTHER NON-TEACHING STAFF	5
NUMBER OF MANDATORY TRAINING QUALIFIED TEACHERS	0	NUMBER OF TRAININGS ATTENDED BY FACULTY SINCE LAST YEAR	0

CLASS	TOTAL NUMBER OF SECTIONS	TOTAL NUMBER OF INTAKE	TOTAL NUMBER OF STUDENTS
1	1		35
2	1		34
3	1		37
4	1		32
5	1		34
6	1		24
7	1		28
8	1		25
9	1		27
10	1		19
11	0		0
12	0		0

SUBJECTS OFFERED FOR CLASS 10	SUBJECTS OFFERED FOR CLASS 12
546---YOGA 548---GARDENING/SHRAMDAAN 002---HINDI COURSE-A 041---MATHEMATICS 086---SCIENCE 087---SOCIAL SCIENCE 184---ENGLISH LNG & LIT. 462---INFO TECHNOLOGY(C) 531---LITERARY AND CREATIVE SKILLS 532---SCIENCE SKILLS 534---ORG. AND LEADERSHIP SKILLS 535---ICT SKILLS	

TOTAL NUMBER OF SITES OF SCHOOL	1	TOTAL NUMBER OF BUILDING BLOCKS	5
TOTAL AREA OF SCHOOL IN SQUARE METRES	8093	TOTAL NUMBER OF PLAYGROUNDS	2
TOTAL AREA OF PLAYGROUND IN SQUARE METRES	2450	TOTAL NUMBER OF ROOMS	19
TOTAL NUMBER OF SMALL-SIZED ROOMS	5	TOTAL NUMBER OF MEDIUM-SIZED ROOMS	7
TOTAL NUMBER OF LARGE-SIZED ROOMS	7	TOTAL NUMBER OF MALE REST ROOM	1
TOTAL NUMBER OF FEMALE REST ROOM	1	NUMBER OF GIRLS' TOILET	3
NUMBER OF BOYS' TOILET	4	NUMBER OF TOILETS FOR DIFFERENTLY ABLED PERSONS	0
NUMBER OF WASHROOMS FOR FEMALE STAFF	1	NUMBER OF WASHROOMS FOR MALE STAFF	2
TOTAL NUMBER OF LIBRARIES	1	NUMBER OF LABORATORIES	1
TOTAL NUMBER OF STUDENT CANTEENS	2	TOTAL NUMBER OF STAFF CANTEENS	1
NUMBER OF WATER PURIFIERS/ROs	1	NUMBER OF AUDITORIUMS	1
NUMBER OF LIFTS/ELEVATORS	0	NUMBER OF DIGITAL CLASSROOMS	2
DOES THE SCHOOL HAS HOSTEL FACILITY	NO	DOES THE SCHOOL HAS GUARDS EMPLOYED FOR SAFETY	YES

DOES THE SCHOOL HAS FIRE EXTINGUISHERS	YES	DOES THE SCHOOL HAS SPRINKLERS	YES
DOES THE SCHOOL HAS CCTV CAMERAS INSTALLED?	YES	IS THE SCHOOL EXAMINATION CENTER OF CBSE?	NO
TOTAL NUMBER OF COMPUTERS IN ALL COMPUTER LAB	1	DOES THE SCHOOL HAS WEB SERVERS	YES
DOES THE SCHOOL HAS A BOUNDARY WALL?	YES	IS YOUR SCHOOL BARRIER FREE/ HAS RAMPS?	YES
DOES THE SCHOOL HAS CLINIC FACILITY?	YES	DOES THE SCHOOL HAS A STRONG ROOM?	NO
DOES THE SCHOOL HAS A GYMNASIUM?	YES	IS YOUR SCHOOL WI-FI ENABLED?	YES
PROVISION OF WEB BASED LEARNING PROGRAMS?	YES	DOES THE SCHOOL HAS FIRE ALARMS?	YES
DOES THE SCHOOL HAS SPORTS FACILITY?	YES	DOES THE SCHOOL HAS INDOOR GAMES FACILITY?	YES
DOES THE SCHOOL HAS A SWIMMING POOL?	NO	DOES THE SCHOOL HAS DANCE/MUSIC FACILITY?	YES
TOTAL NUMBER OF BUSES OWNED	0	TOTAL NUMBER OF BUSES HIRED	0
TOTAL NUMBER OF VANS/MATADORS	0	TOTAL NUMBER OF DRIVERS	0
NUMBER OF FEMALE ATTENDANTS FOR BUS DUTY	0	NUMBER OF ACTIVITY ROOMS	1
NAME OF TRANSPORT COORDINATOR	SUSHIL KUMAR	TRANSPORT COORDINATOR CONTACT	9953811683
BUILDING SAFETY CERTIFICATE	VIEW (PdfHandler.aspx? FileName=G:\cbse\2016\schdetails\building\20706.PDF)	TRANSPORT SAFETY CERTIFICATE	VIEW (PdfHandler.aspx? FileName=G:\cbse\2016\schdetails\INA)

## LOCATION DETAILS

NEAREST NATIONALISED BANK	SBI NARELA NEAR NARELA BUS TERMINAL	DISTANCE OF BANK FROM SCHOOL IN KM	3
NEAREST BUS STATION	NARELA BUS TERMINAL	DISTANCE OF BUS TERMINAL FROM SCHOOL IN KM	3
NEAREST RAILWAY STATION	NARELA RAILWAY STATION	DISTANCE OF RAILWAY STATION FROM SCHOOL IN KM	4
NEAREST AIRPORT	IGI AIRPORT DELHI	DISTANCE OF AIRPORT FROM SCHOOL IN KM	45
NEAREST HOSPITAL	UNIT HOSPITAL SSBN ITBPOLICE CAMP SABOLI	DISTANCE OF HOSPITAL FROM SCHOOL IN KM	0.5
NEAREST POLICE STATION	RAI POLICE STATION	DISTANCE OF POLICE STATION FROM SCHOOL IN KM	7
NEAREST METRO STATION	JAHANGIR PURI METRO STATION DELHI	DISTANCE OF METRO FROM SCHOOL IN KM	

## OTHER VITAL INFORMATION

20706--ITBP PUB SCH PO NATHUPUR SABOLI CAMP SONIPAT HRY

10th BOARD PASS PERCENTAGE (2014/2015/2016)	0/100/100	12th BOARD PASS PERCENTAGE (2014/2015/2016)	0/0/0
NAME OF WELLNESS/ACTIVITY TEACHER	YES	NAME OF GRIEVANCE/COMPLAINT REDRESSAL OFFICER	SUKRAM PAL
CONTACT NUMBER OF GRIEVANCE/COMPLAINT REDRESSAL OFFICER	9953811683	EMAIL ID OF GRIEVANCE/COMPLAINT REDRESSAL OFFICER	yadavsp9770@gmail.com
NAME OF HEAD OF SEXUAL HARASSMENT COMMITTEE	Dr Vandna Bhatnagar	CONTACT NUMBER OF HEAD OF SEXUAL HARASSMENT COMMITTEE	27283996
EMAIL ID OF HEAD OF SEXUAL HARASSMENT COMMITTEE	itbppublicschool530@gmail.com	NAME OF CONTACT PERSON IN CASE OF EMERGENCY	SUKRAM PAL
CONTACT NUMBER OF CONTACT PERSON IN CASE OF EMERGENCY	9953811683	EMAIL ID OF CONTACT PERSON IN CASE OF EMERGENCY	yadavsp9770@gmail.com
TOTAL NUMBER OF DOCTORS IN SCHOOL CLINIC	2	TOTAL NUMBER OF NURSES IN SCHOOL CLINIC	4
TOTAL NUMBER OF BEDS IN SCHOOL CLINIC	8	LEVEL OF INVOLVEMENT OF SCHOOL IN CBSE ACTIVITIES	ACTIVE



DO THE TEACHERS GET PROPER GRADE LIKE PGT/TGT AS PER THE CLASSES THEY ARE ENTITLED TO TEACH?	YES	DO THE TEACHERS AND STAFF GET THEIR SALARY WITHIN FIRST WEEK OF THE MONTH?	YES
DOES THE SCHOOL HAS EPF FACILITY FOR STAFF	YES	EPF REGISTRATION NUMBER	22 BN 1099
MODE OF SALARY PAYMENT	bankpayment	NAME OF BANK WITH SALARY ACCOUNT	SBI NARELA
ARE THE SCHOOL ACCOUNTS AUDITED REGULARLY?	YES	PARENT TEACHERS ASSOCIATION AS PER NORMS	NO
ACADEMIC SESSION	APRIL TO MARCH	VACATION PERIOD	MAY TO JUNE
AUDITED BALANCE SHEET OF SCHOOL	VIEW (PdfHandler.aspx? FileName=G:\cbse\2016\schdetails\balance\20706.pdf)	STAFF STATEMENT OF SCHOOL	VIEW (PdfHandler.aspx? FileName=G:\cbse\2016\schdetails\sta\20706.pdf)
INCOME AND EXPENDITURE STATEMENT	VIEW (PdfHandler.aspx? FileName=G:\cbse\2016\schdetails\income\20706.pdf)	ACADEMIC CALENDAR OF SCHOOL	VIEW (PdfHandler.aspx? FileName=G:\cbse\2016\schdetails\academic\20706.pdf)

#### BEST PRACTICES OF SCHOOL

100 PERCENT RESULT FROM PREVIOUS 2 YEARS ,MANY OF THE STUDENTS IN LAST YEAR CLASS TENTH ARE HAVING MORE THAN 8 CGPA. SCHOOL STUDENTS PARTICIPATES AT VARIOUS CULTURAL PROGRAMS OF ITBP FORCE.

CLASS	ADMISSION FEE (in Rupees)	TUITION FEE (in Rupees)	YEARLY DEVELOPMENT CHARGES (in Rupees)	ANNUAL/MONTHLY OTHER CHARGES FOR OTHER FACILITIES (in Rupees)
PRIMARY	800	325	1200	100
MIDDLE	800	350	1200	125
SECONDARY	800	400	1200	150
SENIOR SECONDARY	0	0	0	0

SCHOOL PHOTOS

GEO-TAGGED PHOTO



PLAYGROUND PHOTO



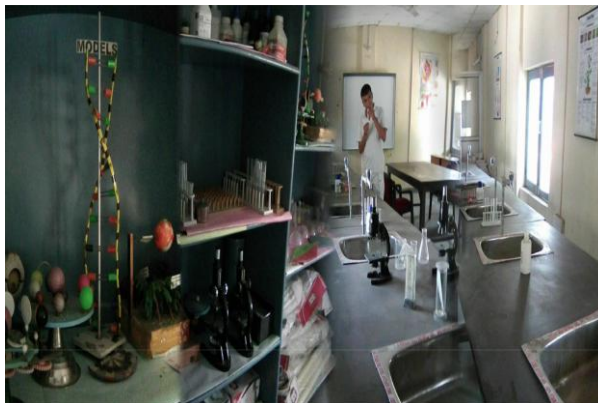
LIBRARY PHOTO



SCIENCE LAB PHOTO



PHYSICS LAB PHOTO



CHEMISTRY LAB PHOTO



BIOLOGY LAB PHOTO

